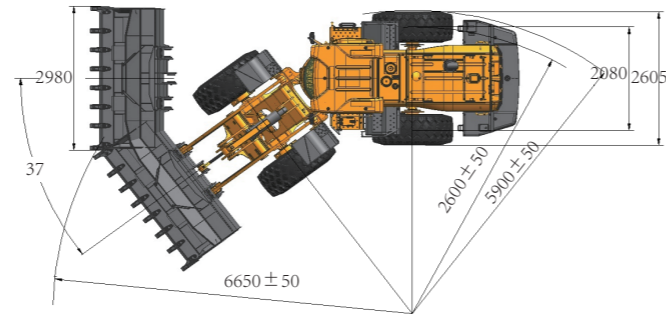
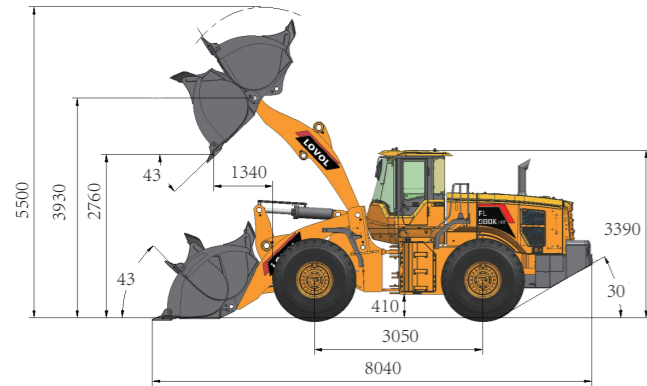


FL948K Wheel Loader Specifications

LOVOL

FL948K Dimensions



Item	Specifications
Rated Load	4500kg
Max. Traction Force	114kN
Max. Gradeability	30°
Max. Dump Clearance	2760mm
Dump Reach	1340mm
Wheel Tread	2080mm
Wheelbase	3050mm
Overall Dimension (L×W×H)	8040mm×2980mm×3390mm
Width Over Tyres	2605mm

Engine	
Emission Standard	Stage III
Number of Cylinder-Bore/Stroke	6-107×124
Max. Torque	895N·m
Rated Speed	2000rpm
Displacement	6.7L

Transmission System	
Torque Converter	/
Modulus of Converter	/
Transmission	HST Auxiliary box
Gear Shift	3 forward, 3 reverse
Max. Speed	35.0km/h

Front and Rear Axles	
Axles Type	Wet axle
Final Decelerate Type	Spur gear planetary reduction

Tyre	
Tyre Size	20.5R25/L-5
Ply	★★
Front Tyre Pressure	0.635-0.665MPa
Rear Tyre Pressure	0.55-0.6MPa

Steering System	
Steering Angle Each Direction	37°
Min. Turning Radius	5600mm

Hydraulic System	
Working Pressure	21MPa
Boom Lifting Time	5.4s
Total Cycle Time	10.4s

Brake System	
Service Brake	Full hydraulic wet brake
Park Brake	Full hydraulic wet brake

Service Refill Capacity	
Fuel Tank	300L
Hydraulic Tank	175L
Engine Oil	20L



LOVOL HEAVY INDUSTRY GROUP CO.,LTD.

Address: No. 75, Huanghe East Road, Huangdao District, Qingdao City, Shandong Province, China.

Website: en.lovol.com E-mail: lovol_overseas@global.lovol.com TEL: +86-532-86907190 Facebook: Cons Lovol

As manufacturer, LOVOL has right to constantly upgrade and improve our products without informing to customers. The pictures in literatures are for reference only, the detailed specifications are subject to real products.

Engine Model	Cummins QSB7
Rated Power	153KW
Operating Weight	16700KG
Bucket Capacity	3.0M³
Max. Breakout Force	161KN

FL948K

WHEEL LOADER



ROBUSTNESS

- Add curved reinforcing plates to the inside of the bucket and the root of the ear plate to enhance the strength, torsional resistance, and wear resistance of the bucket

Heavy duty brackets: equal life design, longer service life, low insertion resistance

Scimitar-type side blade: a transition-type equal-life design with a wide lower and narrower upper section, improving wear resistance and making it easier to fill

RELIABILITY

- The operation requires almost no braking intervention. No impact, and the drive axle main reduction and wheel side gear failure are greatly reduced

The service life of the brake valve is greatly extended, and the wear of the friction plate is reduced, which eliminates the need for replacement in the long run

Hydraulic parts are foreign imported brands with reliable quality

SAFETY

- Multi-stage braking, to ensure the safety of the vehicle (HST braking, service braking, parking braking);

The ramp holding function allows you to park on a ramp without applying the brake;

Multiple program protection functions(thermal protection, clutch protection, pump / motor overspeed protection, etc.).

COMFORT

- The noise beside the driver's ear is 3-4dB lower than the hydraulic loader

Continuously Variable Transmission, acceleration and deceleration is extremely stable

Stop the gas and slow down, almost no need to step on the brakes

Automatic shift, smooth shift

Continuous traction output during gear shifting without interruption

01 Engine



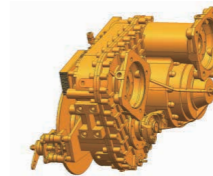
- B7 engine

Customized development of HST exclusive performance curve

Perfect match with the HST drive system;

High economy, high response, and low fuel consumption.

02 Transmission



- Zhuzhou Gear

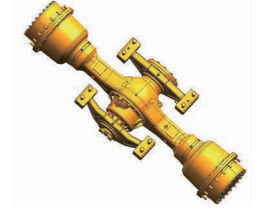
2 + 1 hydraulic motor transfer box;

Simple structure, easy to maintain

High input torque, superior performance

Wet clutch, with high reliability

03 Axles



- Wet multi-disc brakes are used to avoid external environmental pollution. The brakes have a long service life and require very little maintenance

Using lubricating oil, better heat dissipation effect and more reliable braking performance

The scientifically designed limited slip differential greatly improves the traction and passing ability of the vehicle on the harsh road surface

04 Cab

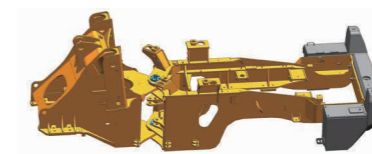


- Increase the interior space of the cab to improve the driving comfort and safety

The interior adopts a new design to meet the functions of electronic appliances while increasing storage space

Optimize the layout of air conditioning outlets and add a rear outlet, which can also serve as a rear defrost outlet.

05 Frame and Articulation

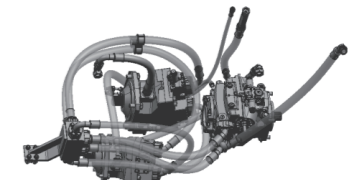


- Center layout of the front and rear frame wheelbase

Optimized by finite element analysis, high stiffness, impact resistance

Burst fatigue test verification, high reliability.

06 Hydraulic System



- Adopting a hydrostatic system to achieve infinite speed regulation, with strong power and low fuel consumption

Working hydraulic pilot operation, easy to operate

Adopting a priority load sensing steering system, the steering control accuracy is high

Attachments



Larger Bucket



Log Grapple



Rock Bucket



Grass Grapple



Coal Bucket



Side-dump Bucket